

Dave Barthelmy

From: news@aamineralspecimens.com
Sent: Sunday, November 23, 2008 01:04 AM
To: dbarthelmy@webmineral.com
Subject: 23rd November 2008 Broken Hill special



AA MINERAL SPECIMENS

61 2 9980 9815

ABN 83 320 547 821

23rd November 2008

Dear Dave Barthelmy

This week we are featuring specimens from Broken Hill, Australia and have included a brief summary of the Broken Hill location below.

Please examine the minerals we have included in this news letter but keep in mind that this is only a small part of our Broken Hill stock. To see our entire stock, enter Broken Hill in the empty panel under "SEARCH" on the left hand side of the home page and click on the arrow pointing to the right. Remember that there are 6 pages of Broken Hill samples so be sure to scroll to the top or bottom of each page and on the right you will find other page numbers to click on to take you to more Broken Hill specimens.

If you are not familiar with our "SEARCH" facility try putting in any relevant term that interests you and see what we may have.

Best wishes,

Susan and Bruce

NB: If you are having trouble displaying the images in this newsletter, you may need to click the 'display content' link at the top of your page. Also, adding our email address to your address book will in many cases solve the problem. You can also view this newsletter by going to our newsletter page, clicking on the + sign, and selecting the newsletter you wish to view.

In This Issue

[Broken Hill, NSW
Australia](#)

[Broken Hill specimens](#)

[Our Itinerary](#)

[Quick Links](#)

[Home Page](#)

[New Stock](#)

[About Us](#)

[Previous Newsletters](#)

[Join Our Mailing List](#)

[Join Our Mailing List](#)

Broken Hill NSW Australia

Broken Hill, in the desert of the far west of the state of New South Wales, is one of the world's premiere collecting localities.

The Broken Hill Lode is one of the world's largest and richest poly-metallic base metal deposits and is characterized by the huge number of mineral species occurring in the load.

The variety of primary minerals is matched by the number and quality of the near surface secondary species.

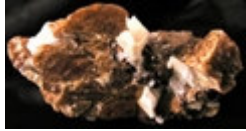
The mineral province containing Broken Hill is old, complex and very large making it an almost

uniquely rewarding experience for the mineral enthusiast.

Probably only Tsumeb could claim comparison as a specimen locality.

Broken Hill is also approaching the end of production and the supply of new specimen material is increasingly limited. This applies particularly to the secondary minerals.

Broken Hill featured specimens



Bustamite

Bustamite, galena. Zinc Corporation Mine, Broken Hill, NSW, Australia.



Calcite

Calcite, North Mine, Broken Hill, New South Wales, Australia.



Galena Chalcopyrite

Galena with chalcopyrite, North Mine, Broken Hill, New South Wales, Australia.



Garnet, Galena

Garnet, Galena, Broken Hill, NSW, Australia.



Kutnohorite, Calcite

Kutnohorite & Calcite, Broken Hill, New South Wales, Australia



Pyromorphite

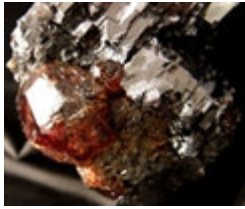
Pyromorphite crystal, Old BHP Open Cut Mine, Broken Hill, New South Wales, Australia.



Rhodonite, Sphalerite

Rhodonite, Sphalerite, North Mine, Broken Hill, New South Wales, Australia.

Spessartine, Galena



Spessartine, galena. Zinc Corporation Mine,
Broken Hill, New South Wales, Australia.

Itinerary

December 2008

Sunday 7th December

Wahroonga Village Fair

Wahroonga (Sydney, NSW)

February 2009

31 January to 15 February

Stall 209, JG& M Exposition, Simpson Street

Tucson, Arizona, USA

[Unsubscribe](#)
from AA Mineral Specimens Newsletter

Copyright 2008 AA Mineral Specimens www.aamineralspecimens.com